



PRODUCT FEATURES:

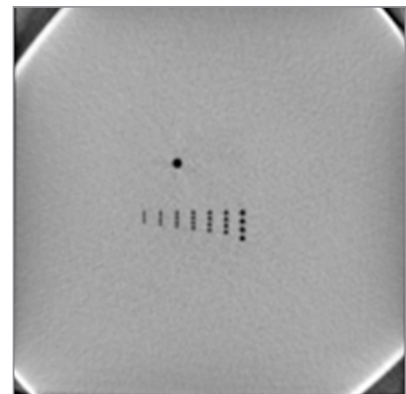
- Complies with DIN 6868-150
- Test Cone Beam functionality
- CE certified

RaySafe P 3D Fluoro phantom

The RaySafe P 3D is used to test the cone beam functionality of fluoroscopic x-ray systems. After carrying out image quality test on 2D image acquisition with the RaySafe P Fluoro, you evaluate the 3D capability of 3D reconstruction module.

TECHNICAL DATA Product No. 1921052

- Dimensions: 120 x 120x x 60 mm
- Weight: 1.0 kg
- Material: PMMA, 3 plates glued together where the inner plate holds drillings for spatial resolution tests with diameters at 0.50, 0.60, 0.70, 0.80, 0.90, 1.00, 1.30 mm
- One extra drilling 2.5 mm diameter through all 3 plates.
- Delivered in hard case



PARAMETERS TO TEST WITH RAYSAFE P 3D:

- spatial resolution of 3D image
- homogeneity in 3D image
- noise in 3D image
- artefacts in 3D image